

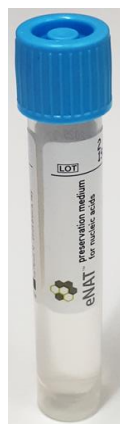
PARASITES, NUCLEIC ACID, STOOL

F- ParaNho (6375)

The purpose of the F –ParaNho examination is to determine the cause of stomach upset and diarrhoea, particularly after trips abroad. The sample is examined, by a PCR-based test, for traces of *Giardia lamblia*, *Cryptosporidium* spp, *Entamoeba histolytica* and *Dientamoeba fragilis*. Protozoan parasites *G. lamblia*, *Cryptosporidium* and *D. fragilis* may cause epidemics also in Finland.

Sampling equipment

- Wide sample container or a kidney dish
- Name tag
- Plastic bag (for example, Minigrip®)
- eNat® sampling tube and



PLEASE NOTE!

The eNat® sampling tube contains guanidinium thiocyanate, which is **harmful to humans if swallowed, in contact with skin or eyes.** In the event of spillage, rinse skin with plenty of water. If the chemical has been swallowed, rinse the mouth, drink a little water and contact the Poison Information



Sampling

- Defecate onto a disposable container or a piece of toilet paper. Take a sample of the stool immediately after defecating.
Bloody diarrhoea cannot be used as a sample.
- Open the eNat® sampling package.
- Open the turquoise eNat® sample tube cap and place the tube upright onto a level surface.
- Take the sampling swab from the package and twist it in the stool so enough of the stool sticks to the sampling swab.



Enough stool



Too much stool

- Push the sampling swab into the sampling tube and mix so that the sample dissolves into the storage solution in the tube.
- Dispose of the sampling swab for example in mixed waste and seal the sampling tube carefully with the turquoise cap.
- Attach a name tag you received from the laboratory or filled in yourself onto the sampling tube. The tag must display your name, social security number and day of sampling.
- After sampling, seal the transport containers carefully in the plastic bag.

Storage and transport

The sampling tube must be delivered to the laboratory as soon as possible, preferably on the day of sampling. The sample can be stored in a refrigerator (2–8°C) for three days.