

HAEMOGLOBIN, STOOL, iFOBT® F -hHB (10673)

Determination of gastrointestinal bleeding. Intestinal bleeding may be intermittent. It is recommended to take three separate samples from different defecations. Sampling does not require a special diet.

Sampling equipment

- QuikRead® FOB sampling tube 1–3 pcs preservative <0.1 p-% sodium azide NaN_3
- Disposable sampling container
- Name tag, 1–3 pcs
- Plastic bag (for example, Minigrip®)



PLEASE NOTE!

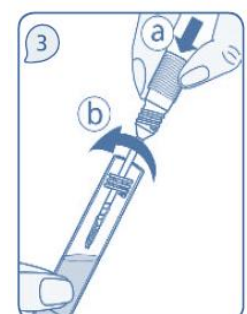
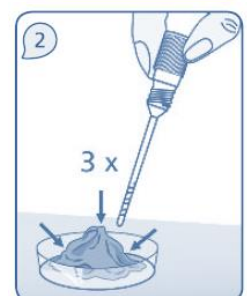
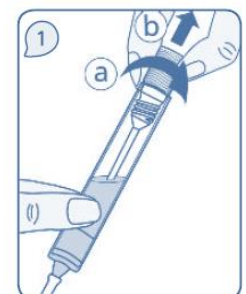
The QuikRead® FOB sampling tube contains, as a preservative, <0.1 p-% of sodium azide NaN_3 , which is **harmful to humans if swallowed, in contact with skin or eyes.**

In the event of a spillage, rinse skin with plenty of water. If the chemical has been swallowed, rinse the mouth with water and contact the Poison Information Center.

Sampling

- A small amount of the faecal sample is placed on a clean, disposable container or a clean toilet paper. Diarrhoea or bloody stool cannot be used as a sample.
- Open the sampling tube cap by twisting it. A sampling swab is attached (image 1).
- Twist the sampling swab in three parts of the stool sample (image 2).
- Place the sampling swab back inside the sampling tube and twist the cap tightly shut (image 3).

Attach a label with your name, social security number, sampling date and time onto the side of the tube.



Storage and transport

The sample is stored in a refrigerator (2–8°C). Transported in room temper

All samples can be delivered to the laboratory at the same time, however, this should be done within 3 days of taking the first sample.